

Mina Cheon POLIPOP & PAINTINGS MAP

15 POLIPOP Digital Paintings (each 8' x 5')

THE OBAMA WALL (YELLOW)

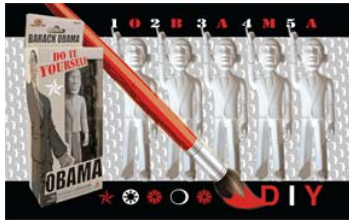
1



“Yes, We Can! Obama & Me”

Standing back to back, this is a portrait of Obama with his campaign slogan “Yes, We Can,” and the artist Mina Cheon with “We Can Do It.” It appropriates the famous J. Howard Miller’s poster of Rosie the Riveter, the icon of American women in factories during WWII.

2



“DYI Obama”

DYI Obama is an action figure toy that was manufactured by Jailbreak Toys, Inc. The fact that this toy comes as a white figure is a bizarre twist to cultural discussions about race that have been pervasive during Obama’s presidency.

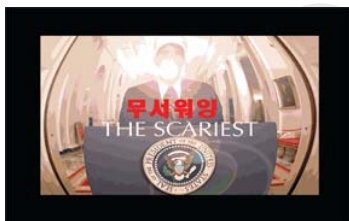
3



“Never Ending Story”

Falcor is a dragon that looks like a dog and represents hopes and dreams in the 1984 film Never Ending Story, directed by Wolfgang Petersen. This film was iconic in terms of heightened fantasy in the entertainment world. Here you see Obama riding Falcor, robed as Jesus. The Obama Room of the “Polipop” exhibition at the Sungkok Art Museum celebrated Obama, the icon of Polipop, and the year of the dragon, 2012.

4



“The Scariest”

Contrasting from the economic recession in America, Obama’s fierce killing of Osama bin Laden has punctuated his presidency with a flash of heroism. Given the fact that this event might be Obama’s lasting positive legacy, it is scary that Obama’s identity is being so closely tied to bin Laden’s with media’s slippage of Osama-Obama imagery. The two faces are merged, the image and idea of the image was so scary that a glare of a camera flash was inserted to interrupt the image of Obama giving his presidential speech to announce the victory. Here, Obama is wearing a turbin and looking “bin Laden.”

5



“How the USA Fell Off”

The hourglass is turned on its side and what is falling off the map is the land of the United States. This is how the U.S.A. fell off the planet, indicating the new Asian (Chinese) century following the “American century.”

THE ASIA WALL (RED)

6



“Ax of Evil”

The three charters of the axis of evil as defined by George W. Bush are Iraq, North Korea, and Iran. Here, these “axis of evil” countries are adorned in devil’s horn head bands (worn by South Korean soccer fans known as the red devils), and become not only “acts” of evil but the Ax of Evil.

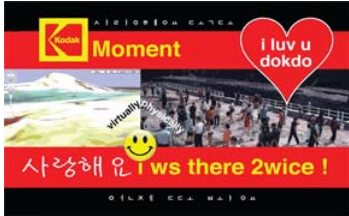
7



“Tiananmen Square”

Today’s traditional China is flooded with franchises and capitalist goods. Here Tiananmen Square is housing Coca Cola, McDonalds, and BMW.

8

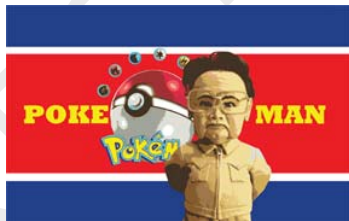


“Kodak Moment at Dokdo”

The artist traveled to Dokdo both physically by boat and virtually by Google Earth. She felt vertigo on both accounts, and seasick. Dokdo, is a contested island that sits between Korea and Japan, which has been fought over territorially for decades between the two countries. Media often deploys this island to call on nationalism in South Korea and to create anti-sentiments towards the Japanese. The island has great symbolic national meaning while the set of islets are merely a small set of rocks with a circumference of only 5.4 km.

THE KOREA WALL (WHITE)

9



“Pokeman”

Kim Jong Il is turned into Pokeman, meaning jokes poked at, inspired by the 2004 film, Team America: World Police, the most popularized characterization of the man in power. This digital painting became an immediate media sensation in South Korea upon Kim Jong Il’s passing in late December 2011.

10



“Superwoman Complex”

The superwoman complex for both South and North Korean woman follows the Confucian law of the obedient Korean woman. Both are very common in that they are brought up to please the nation, be subservient to the larger patriarchal order, bear sons, and know how to cook kimchi from scratch.

THE CAPITALISMWALL (WHITE)

11



“Be Green”

Being green has become a fashion trend, such that sometimes the meaning and method of the green is forgotten. Might as well just be green, like an alien, without truly understanding the ways of sustainability.

12



“Remote Your Natural Disaster”

The TV screen shows recent natural disasters around the world. Here you can remote them, meaning, be removed away from them. Or, you can change channels to get your choice of a different natural disaster. Technology mediates nature into screen experience.

13



“Own Royalty”

With global obsessions over Kate Middleton’s engagement and wedding with Prince William, Diana’s ring has been reproduced for the masses, selling in America for under 20\$, so everyone can own a piece of royalty. Here, you see how Prince William’s kiss can also be bought through Skype, except there is a limit of one kiss per household.

14

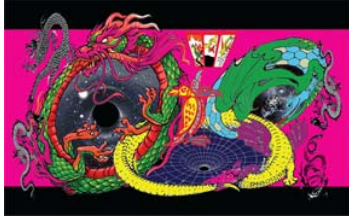


“Capitalism and Contest”

This is an image of all the contestants on American reality shows from 2011, including the Bachelorette, Bachelor, America’s Next Top Model, Survivor, The Biggest Loser, and Bridezilla.

15 BILLION YEARS ROOM (WHITE)

15



“Year of the Dragon 2012”

Dragons are connected in ouroboros fashion, cycling life and celebrating the year of the dragon. The dragon from Eastern astronomy is embedded in the Western cosmology of black holes. The three cards of Go-Stop at the top indicate chance and chaos in the Universe. This piece is most like Mina Cheon’s paintings of the 1990s.

THE MAP WALL (BLUE)

6 POLIPOP Digital Paintings (each 4’ x 3’)



1



“Polipop & Paintings”

The artist created this piece as the representative artwork for the “Polipop & Paintings” exhibition at the Maryland Art Place in 2012. The background is an assemblage of Tootsie lollipops wrapped in red and blue colors to signify the colors of the United States flag. The one made for “Polipop” exhibition at the Sungkok Art Museum included yellow to portray the Korean five colors of ohaeng. That piece is in the Sungkok Art Museum art collection.



“Flag of Sexual Orientation”

The United Nations flag of sexual orientation includes hetero, homo, queer, and transgender.



“Kim Yuna’s Haru (Day)”

South Korea’s contemporary national identity is defined by sports figures. Here is a paper doll sheet with the most famous Olympic ice figure star Kim Yuna and her day (haru). This sheet mimics the 1970s paper doll prints produced in South Korea when the nation was promoting westernization.



“Park Ji-Sung’s Haru (Day)”

South Korea’s contemporary national identity is defined by sports figures. Here is a paper doll sheet with the most famous soccer star Park Ji-Sung and his day (haru). This sheet mimics the 1970s paper doll prints produced in South Korea when the nation was promoting westernization.



“We Can Create Havoc in the Universe”

Leslie King-Hammond was chosen as one of the thirty female leaders of visual arts by the Art Table organization. She selected Cheon as her “one to watch.” This was Cheon’s thank you image, responding to an email by King-Hammond that said, “we can create havoc in the universe.”



“Spam”

This image shows a virus attack on the computer as well as a molecular virus, spam and junk mail as well as spam, the famous ham.

15 BILLION YEARS OF THE TRAVELING ATOM

15 Billion Years of the Traveling Atom is a mammoth 72x8 foot hand painting that Mina Cheon created for the renowned abstract-expressionist painter Grace Hartigan between 1997 -1998 while Cheon worked with her at the Hoffberger School of Painting at the Maryland Institute College of Art (MICA). Produced through the use of florescent acrylic on canvas, and lit under black light, MAP is showcasing this work for the first time under natural light. The 15 Billion Years painting is a celebration of popular science and a cosmic portrayal of the Universe. The painting is sectioned into five parts: “Before the Many Bubble Big Bangs,” “Many Bubble Universes” & “Kick of the Bubble Big Bang Scenario,” “Creation of Four Basic Forces of the Universe: Gravity,

Mina Cheon POLIPOP & PAINTINGS MAP

Electromagnetic, Nuclear Strong-Weak Forces," "The Big Dipper and Evolution," and "The Milkyway." The project was Cheon's attempt to paint the Universe from the big bang explosion to current times. After many years of working as an installation and new media artist, the MAP solo exhibition illuminates Cheon's background as a painter by combing her new Polipop digital paintings with this last hand-painted masterpiece.

- 1  "Before the Many Bubble Big Bangs"
9 x 8 ft
 - 2  "Many Bubble Universes"
& "Kick of the Bubble Big Bang Scenario"
22 x 8 ft
 - 3  "Creation of Four Basic Forces of the Universe:
Gravity, Electromagnetic, Nuclear Strong-Weak
Forces"
16 x 8 ft
 - 4  "The Big Dipper and Evolution"
9 x 8 ft
 - 5  "The Milkyway"
16 x 8 ft
- 15 Billion Years
Circle Painting in Acrylic Plexi Case 18 x 18 x 2.5"
- 15 Billion Years
Circle Painting in Acrylic Plexi Case 14 x 14 x 2.5"